

Master of Business Administration in Aviation

Student Achievement Data

Table of Contents

Metric 1 – Peregrine External Exam Results

Stakeholders: Current Students, Future Students, and Faculty

Metric 2 – Alumni Placement

Stakeholders: Alumni, Current Students, Future Students, Industry

Metric 3 – Program Outcome Skills Preparedness

Stakeholders: Alumni, Current Students, Future Students, Industry

Metric 1 – Peregrine External Exam Results

Stakeholders: Current Students, Future Students, and Faculty

Longitudinal Comparison: Total



PEREGRINE

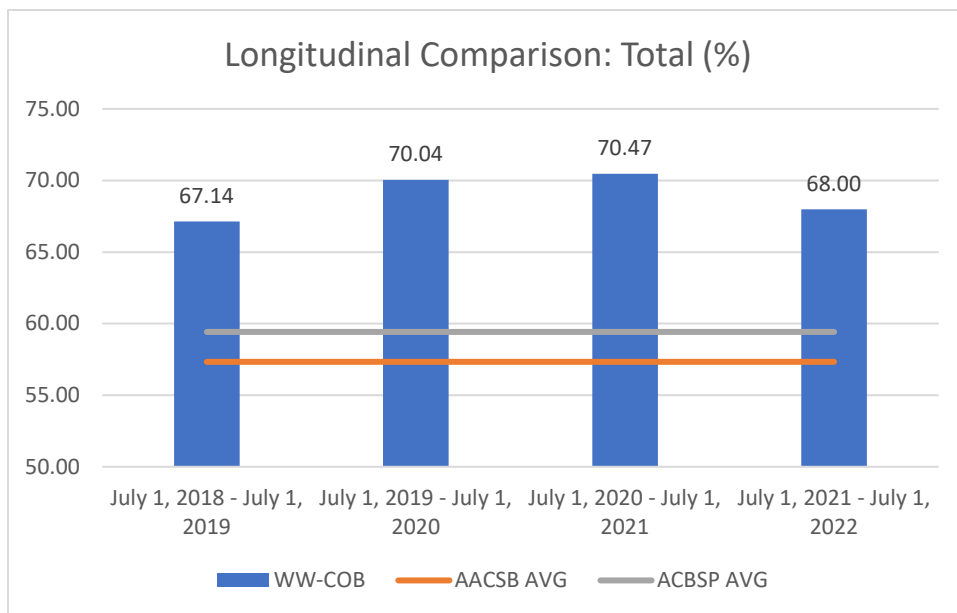
GLOBAL SERVICES

ACADEMIC SERVICES

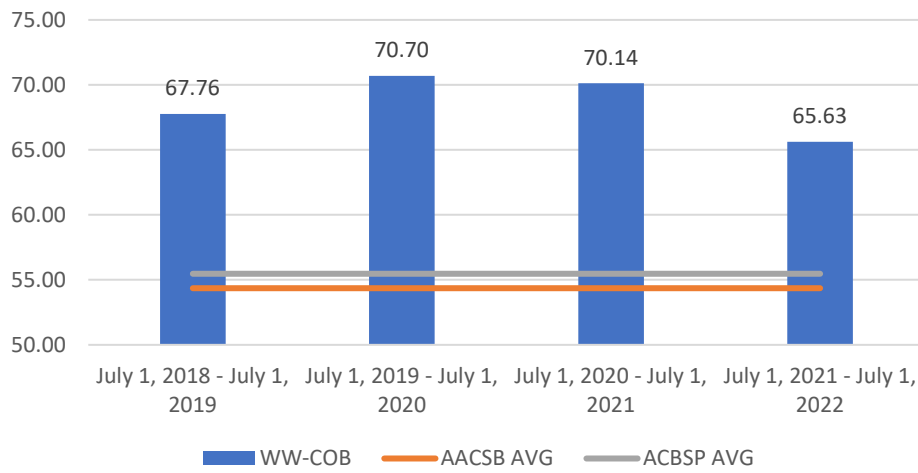
Longitudinal Analysis Report

Embry-Riddle Aeronautical University - Worldwide Campus

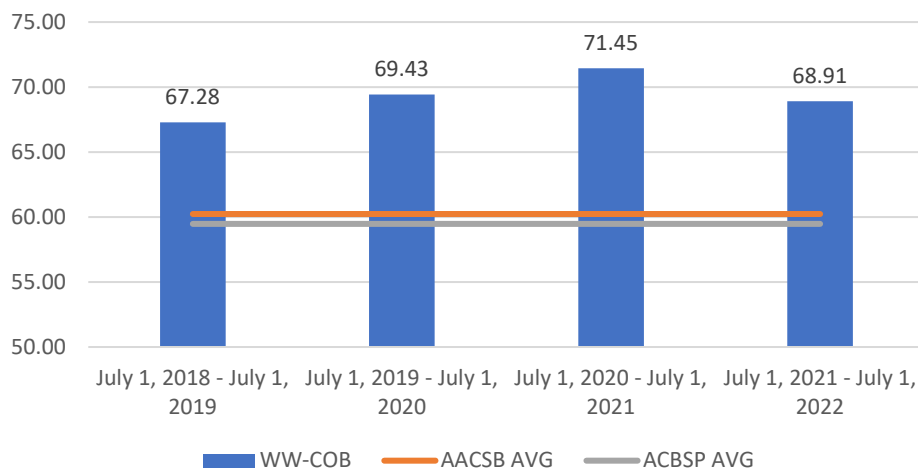
Assessment Period:	July 1, 2018 - June 30, 2019
Number of Exams (Outbound):	232
Assessment Period:	July 1, 2019 - June 30, 2020
Number of Exams (Outbound):	229
Assessment Period:	July 1, 2020 - June 30, 2021
Number of Exams (Outbound):	220
Assessment Period:	July 1, 2021 - June 30, 2022
Number of Exams (Outbound):	174
Assessment:	BUSW 635 Business Strategy for Managers



Longitudinal Comparison: Business Finance (%)



Longitudinal Comparison: Management (%)

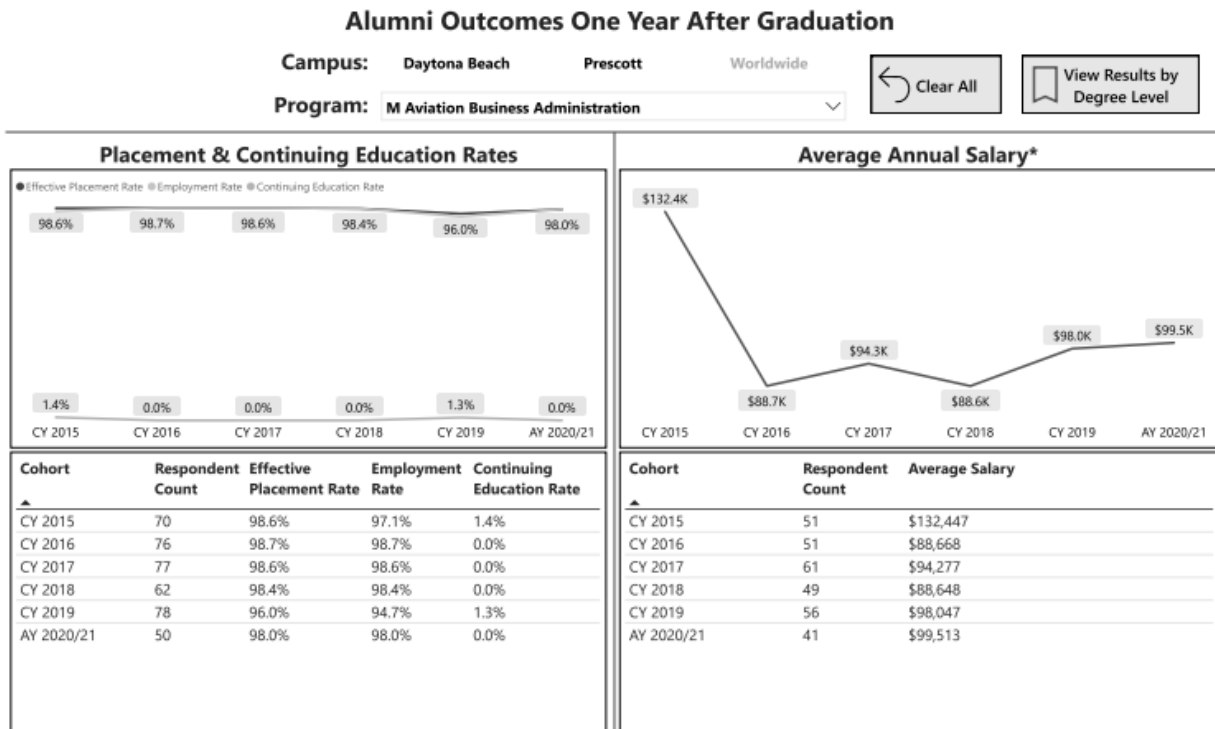


Metric 2 – Alumni Placement

Stakeholders: Alumni, Current Students, Future Students, Industry

Embry-Riddle Aeronautical University Alumni Placement Rates

One Year After Graduation Worldwide Campus - Graduate Degrees



NOTES:

Academic Year (AY) cohorts include degrees July through June each year. Calendar Year (CY) cohorts include degrees January through December each year. Worldwide was transitioned from a Calendar Year to an Academic Year effective AY 2020/21.

* Includes only full-time US salaries and excludes certificates.

Placement Rate calculation:

- (# Employed + # Continuing Education) / (# Employed + # Continuing Education + # Seeking Employment)
- Graduates seeking employment (out of the workforce) are excluded from the placement rate calculation.
- Certificates are excluded.

SOURCE: Residential & Worldwide Alumni Surveys: One Year After Graduation. Institutional Research.

SOURCE: Worldwide Alumni Survey: One Year After Graduation. Institutional Research.

Metric 3 – Program Outcome Skills Preparedness

Stakeholders: Alumni, Current Students, Future Students, Industry

Program-specific Skills: ERAU's preparation

M Business Administration in Aviation – Worldwide

Outcome Text	Usefulness			ERAU Preparation		
	Count	Mean	Percent	Count	Mean	Percent
▢ Ability to apply appropriate quantitative, economic, marketing, planning, accounting, and financial analysis to business problem solving and decision making	48	3.2	100.0%	29	3.0	100.0%
Very Useful/Very High Preparation	18	4.0	37.5%	8	4.0	27.6%
Useful/High Preparation	23	3.0	47.9%	15	3.0	51.7%
Not Very Useful/Little Preparation	7	2.0	14.6%	4	2.0	13.8%
Not at all Useful/Very Little Preparation				2	1.0	6.9%
▢ Ability to apply effective research skills and techniques such as, problem identification, defining the research question(s), and determining methodology, to business projects	48	3.3	100.0%	29	3.0	100.0%
Very Useful/Very High Preparation	21	4.0	43.8%	6	4.0	20.7%
Useful/High Preparation	22	3.0	45.8%	19	3.0	65.5%
Not Very Useful/Little Preparation	5	2.0	10.4%	3	2.0	10.3%
Not at all Useful/Very Little Preparation				1	1.0	3.4%
▢ Ability to apply sound and appropriate communication skills and techniques in the presentation of business problems and projects	48	3.5	100.0%	29	3.0	100.0%
Very Useful/Very High Preparation	24	4.0	50.0%	8	4.0	27.6%
Useful/High Preparation	22	3.0	45.8%	15	3.0	51.7%
Not Very Useful/Little Preparation	2	2.0	4.2%	5	2.0	17.2%
Not at all Useful/Very Little Preparation				1	1.0	3.4%
▢ Ability to understand and apply sound and appropriate business practices, policy, procedures, regulations, ethics, concepts and skills	48	3.4	100.0%	29	3.1	100.0%
Very Useful/Very High Preparation	24	4.0	50.0%	5	4.0	17.2%
Useful/High Preparation	21	3.0	43.8%	22	3.0	75.9%
Not Very Useful/Little Preparation	2	2.0	4.2%	1	2.0	3.4%
Not at all Useful/Very Little Preparation	1	1.0	2.1%	1	1.0	3.4%
Total	192	3.4	100.0%	116	3.0	100.0%

SOURCE: Worldwide Alumni Survey: One Year After Graduation. Institutional Research.

<https://app.powerbi.com/view?r=eyJrIjoiazGI4YjlkMjQtMzlxZi00ZDRkLThZjYtZWZjYUQ1MWMxNWU2IiwidCI6IjY5MzFjOTYzLTA3YjctNDE1Ni1hYjBILTM1ZDFmNzkwMzViOCIsImMiOiJF9&pageName=ReportSection>